

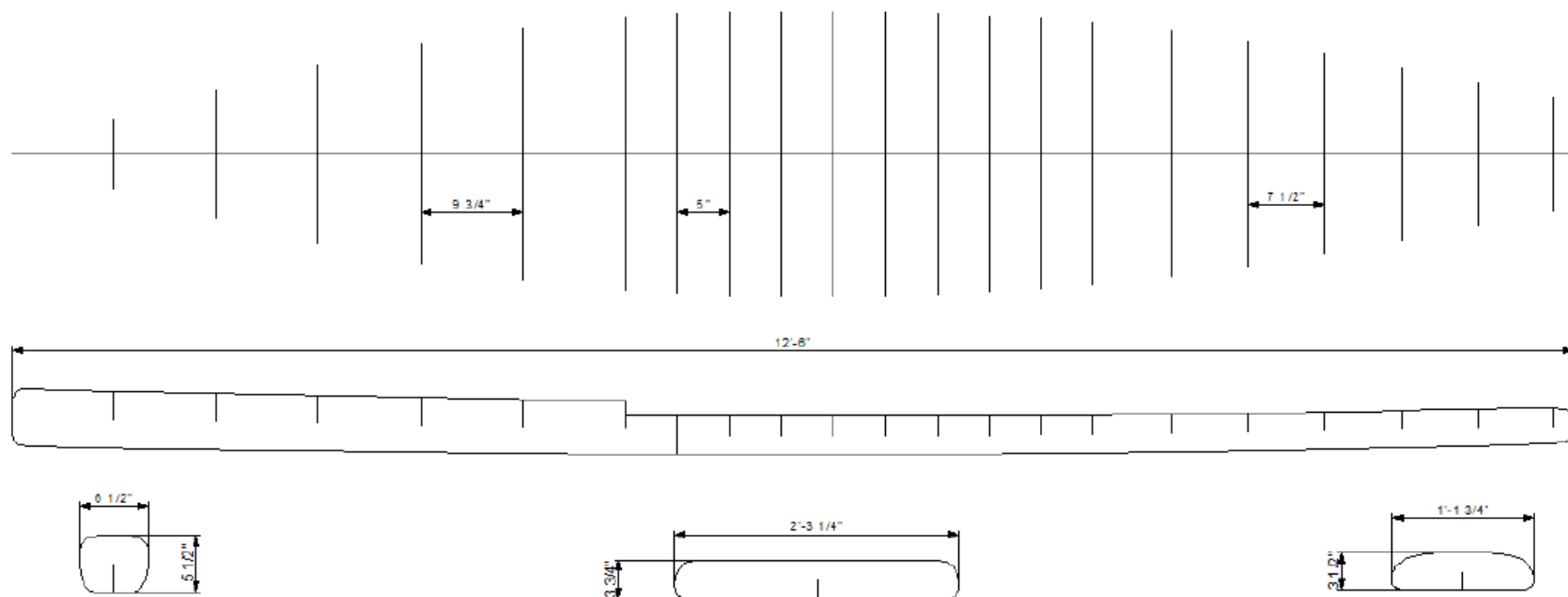
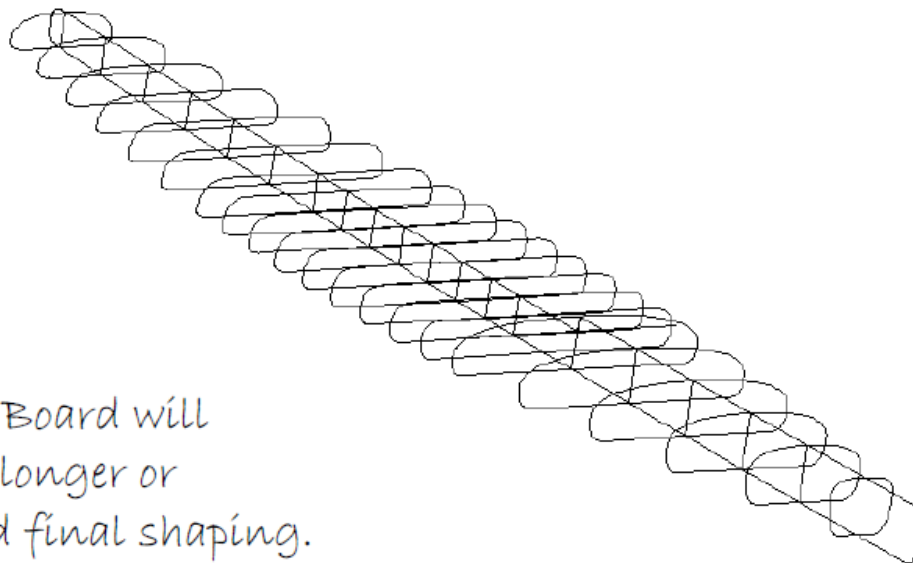


2014 FRAME CATALOG

Kit Name	Page
12'6" Clearwater Race Paddleboard	1 <i>NEW</i>
15'0" Paddle Cat 200	2 <i>NEW</i>
15'7" Paddle Cat 350 (big guy) or Reg guy + gear+ dog + cooler	3 <i>NEW</i>
5'6" Fast Lucy	4
6'3" Mid Fish	5
6'10" King Fish . (big guy)	6
5'6" Fugu Fish	7
6'8" Toad	8
7'0" Driftwood	9
8'0" Driftwood	10
8'0" Driftwood Sr. (big guy)	11
7'4" Chameleon	12
8'6" Chameleon	13
9'6" Cal Gun	14 <i>NEW</i>
9'0" Cruiser	15
9'6" Cruiser	16
8'5" MiniMal	17
11'0" Malco SUP	18
12'0" Lake Sup	19
12'0" Orca	20
9'6" Stu's Surf SUP	21
Tom Blake Replica	22
9'0" Robert August WIR	23
9'6" Robert August WIR	24
10'0" Gordo	25
10'6" Muy Gordo	26
"Sand,Seal,Surf" Alaia #1	27

Wood Surfboard Supply.com
The "Clearwater" Race Paddleboard
12'6" (length adjustable)
Shaper: Randy Bogardus
Frame Design: Randy Bogardus

Note: These are exact frame dimensions. Board will finish approximately $\frac{1}{2}$ " thicker and 2" longer or shorter depending on materials used and final shaping.



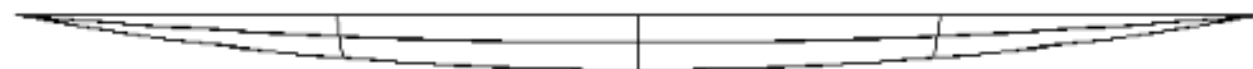
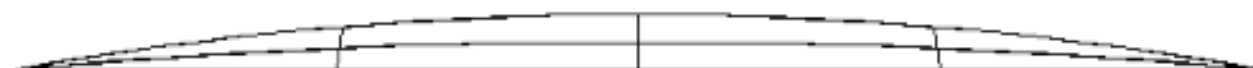
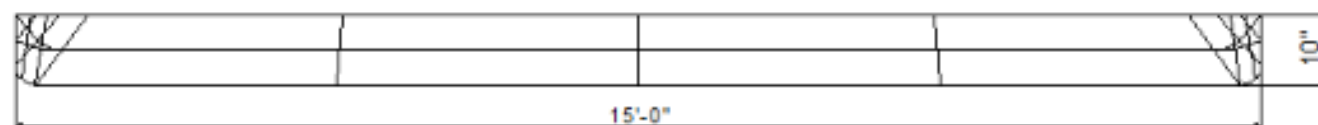
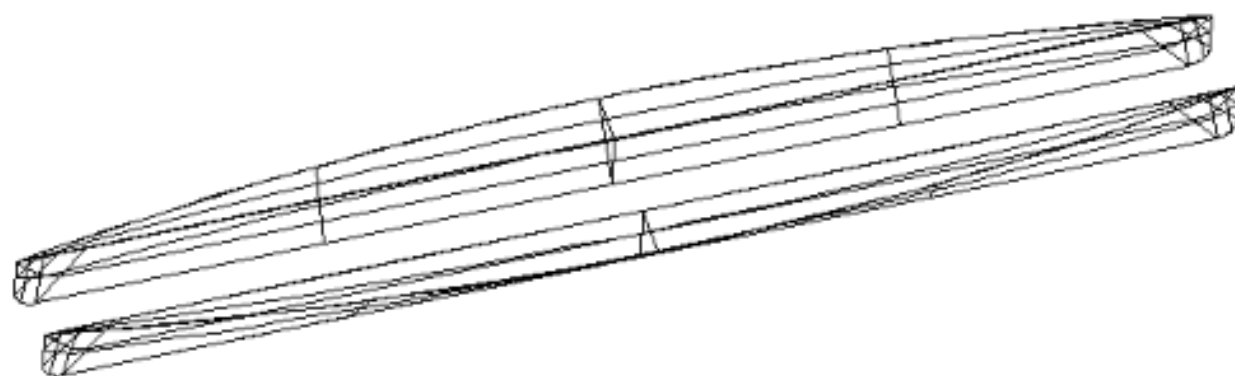
Wood Surfboard Supply

15' 0" Paddle Cat 200

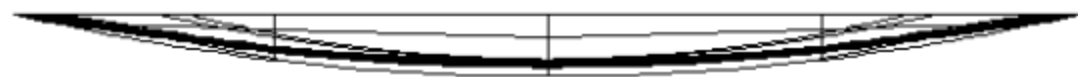
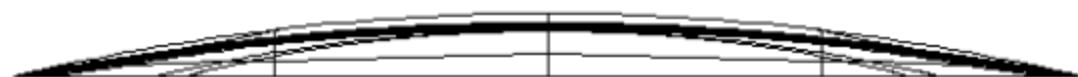
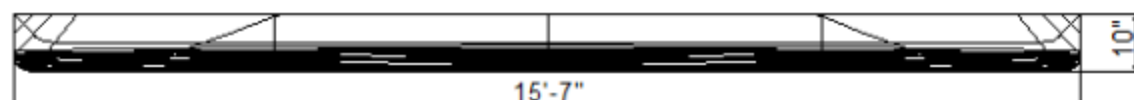
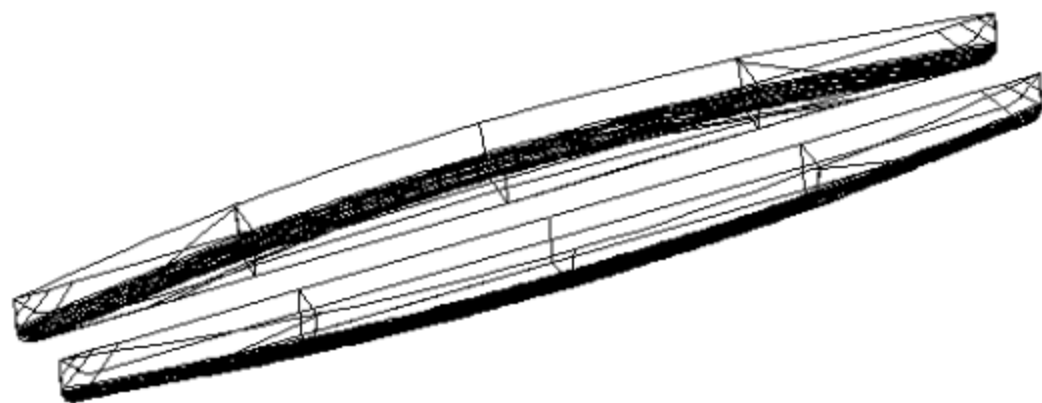
Shaper: Brad Tucker

200lb + capacity

Stitch and Glue construction.



Wood Surfboard Supply
15' 7" Paddle Cat 350
Shaper: Brad Tucker
350lb + capacity
Stitch and Glue construction.



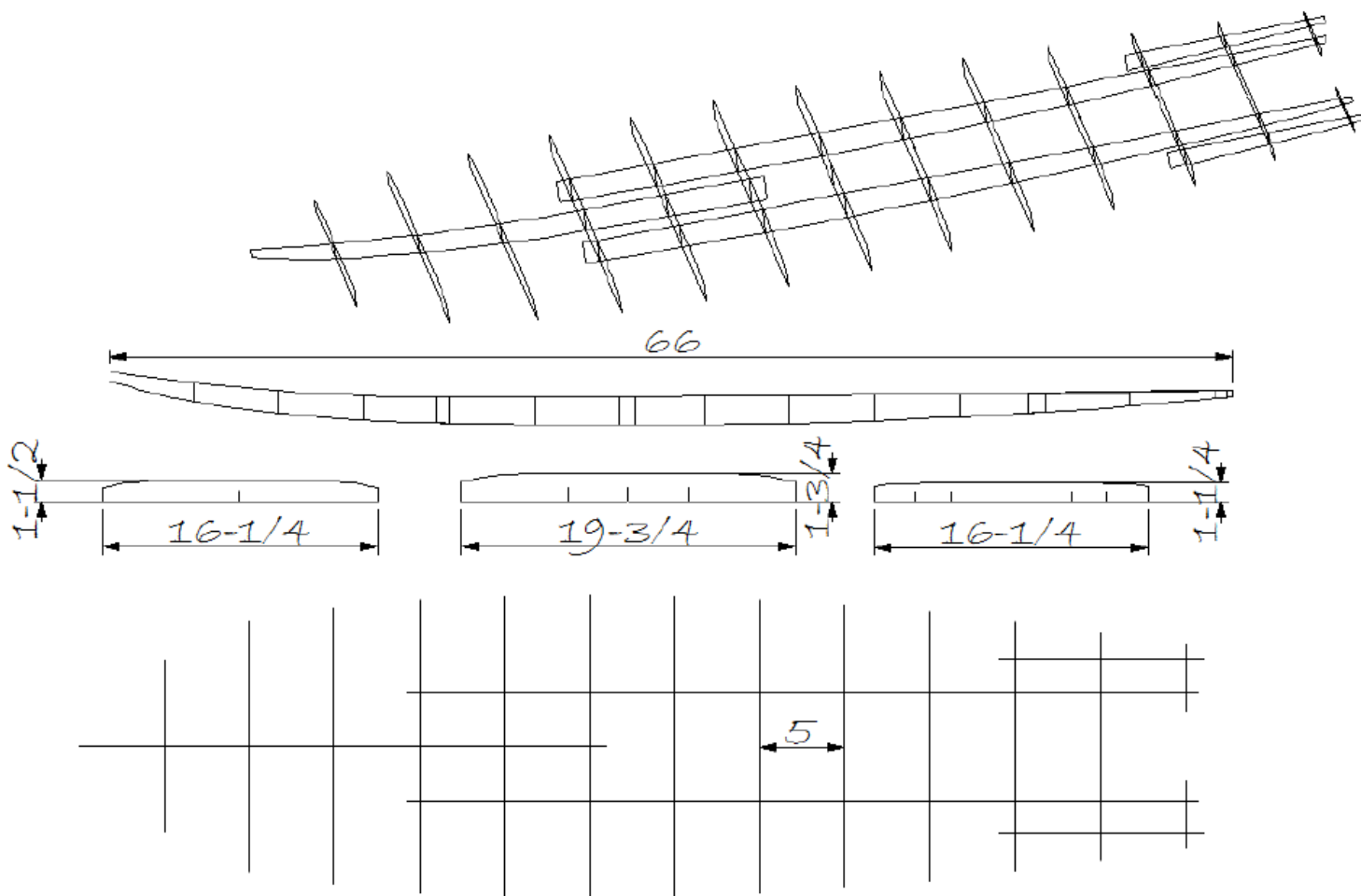
HOLLOWBALSA.COM

5'6" Fast Lucy Fish

Shaper: Cache Tucker and Brad Tucker

Frame design: Brad Tucker

Note: These are exact frame dimensions. Board will finish approximately $\frac{1}{2}$ " thicker and up to 2" longer or shorter depending on materials used and final shaping



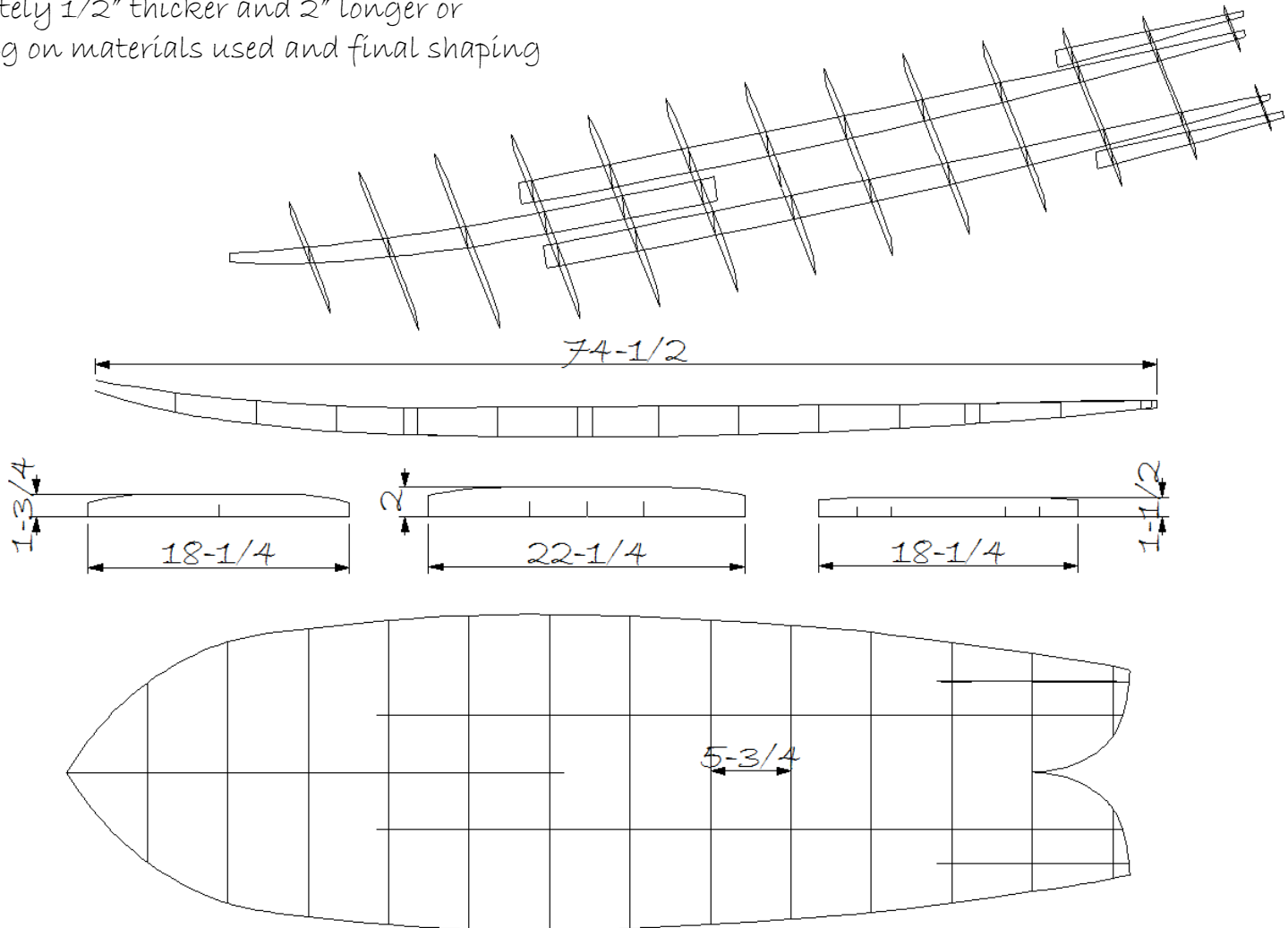
HOLLOWBALSA.COM

6'3" Mid Fish

Shaper: Cache and Brad Tucker

Frame Design: Brad Tucker

Note: These are exact frame dimensions. Board will finish approximately 1/2" thicker and 2" longer or shorter depending on materials used and final shaping



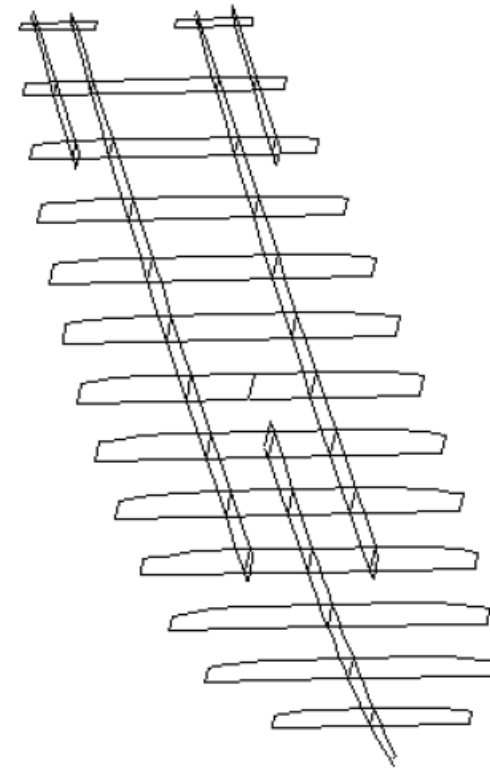
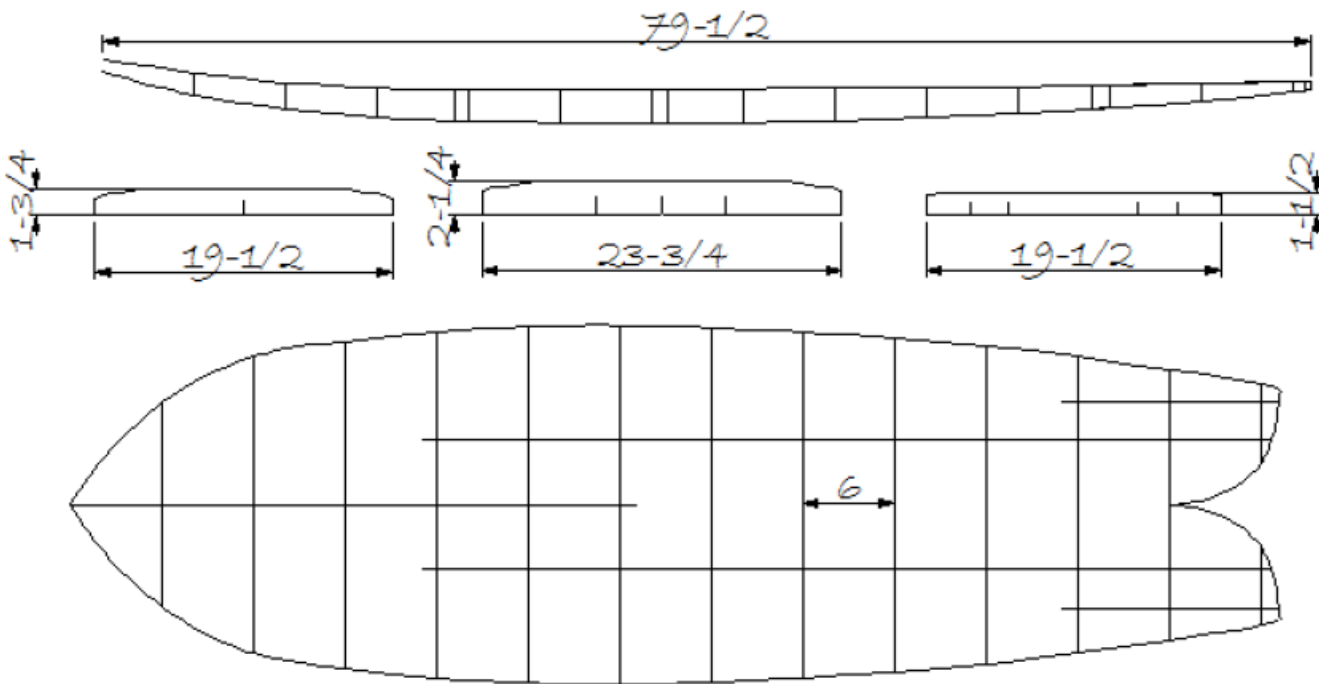
HOLLOWBALSA.COM

6'10" King Fish

Shaper: Brad Tucker

Frame Design: Brad Tucker

Note: These are exact frame dimensions. Board will finish approximately $\frac{1}{2}$ " thicker and 2" longer or shorter depending on materials used and final shaping.



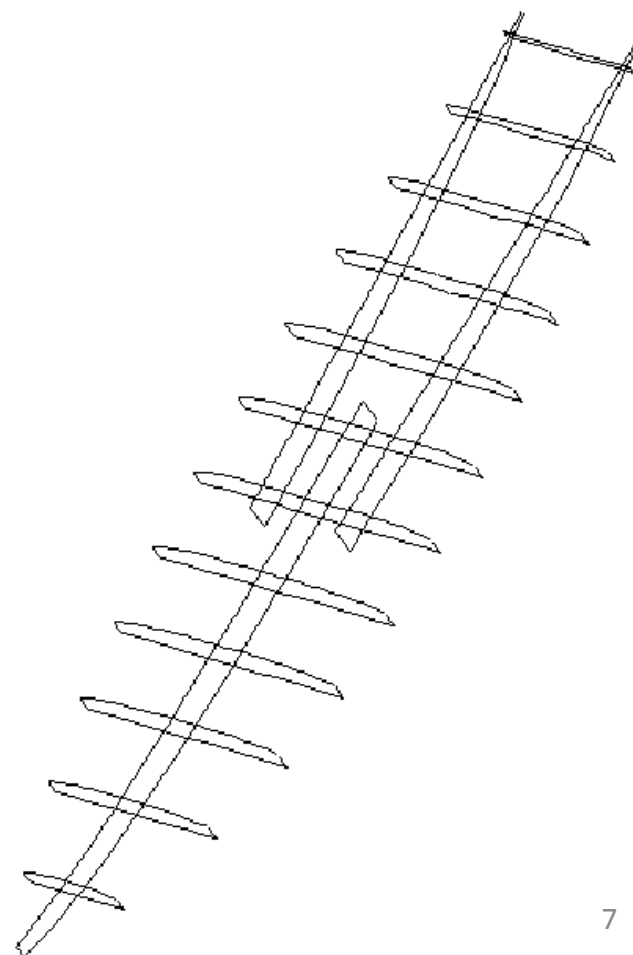
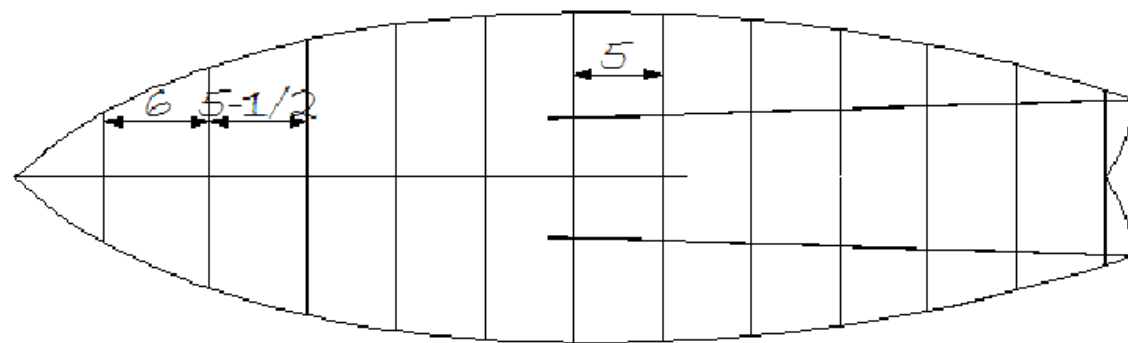
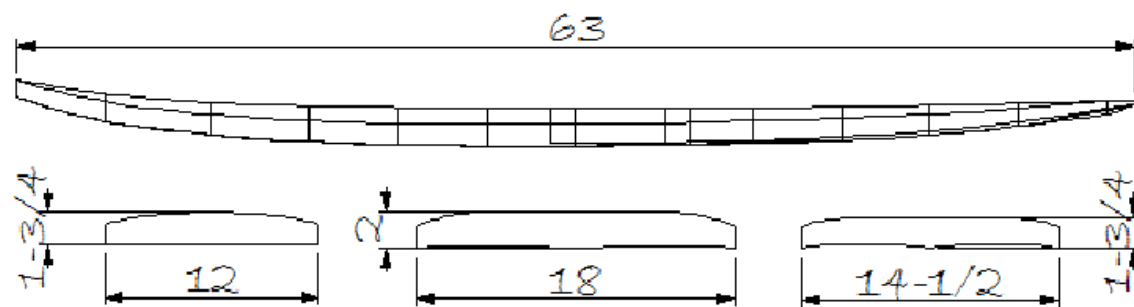
HOLLOWBALSA.COM

5'6" Fugu Fish

Shaper: Justin Grover www.liquidlifestyles.com.au

Frame design: Brad Tucker

Note: These are exact frame dimensions. Board will
Finish approximately $\frac{1}{8}$ " thicker and up to 2" longer or
Shorter depending on materials used and final shaping



HOLLOWBALSA.COM

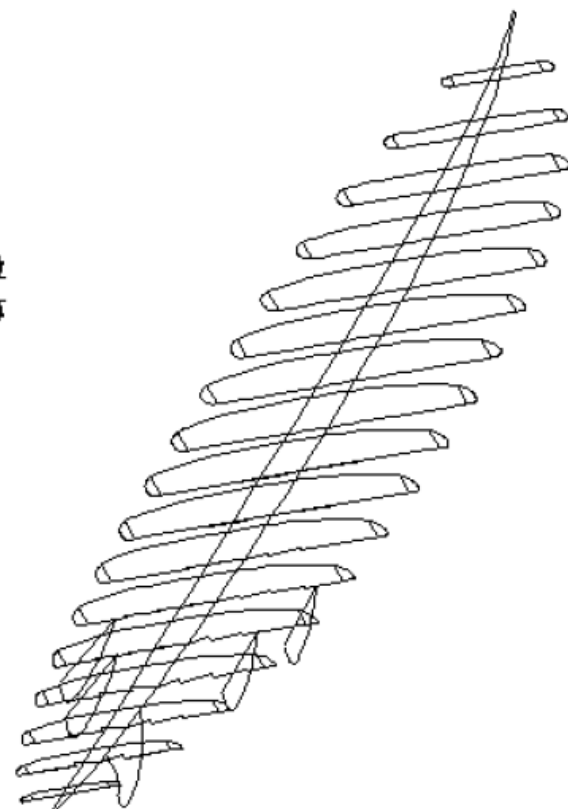
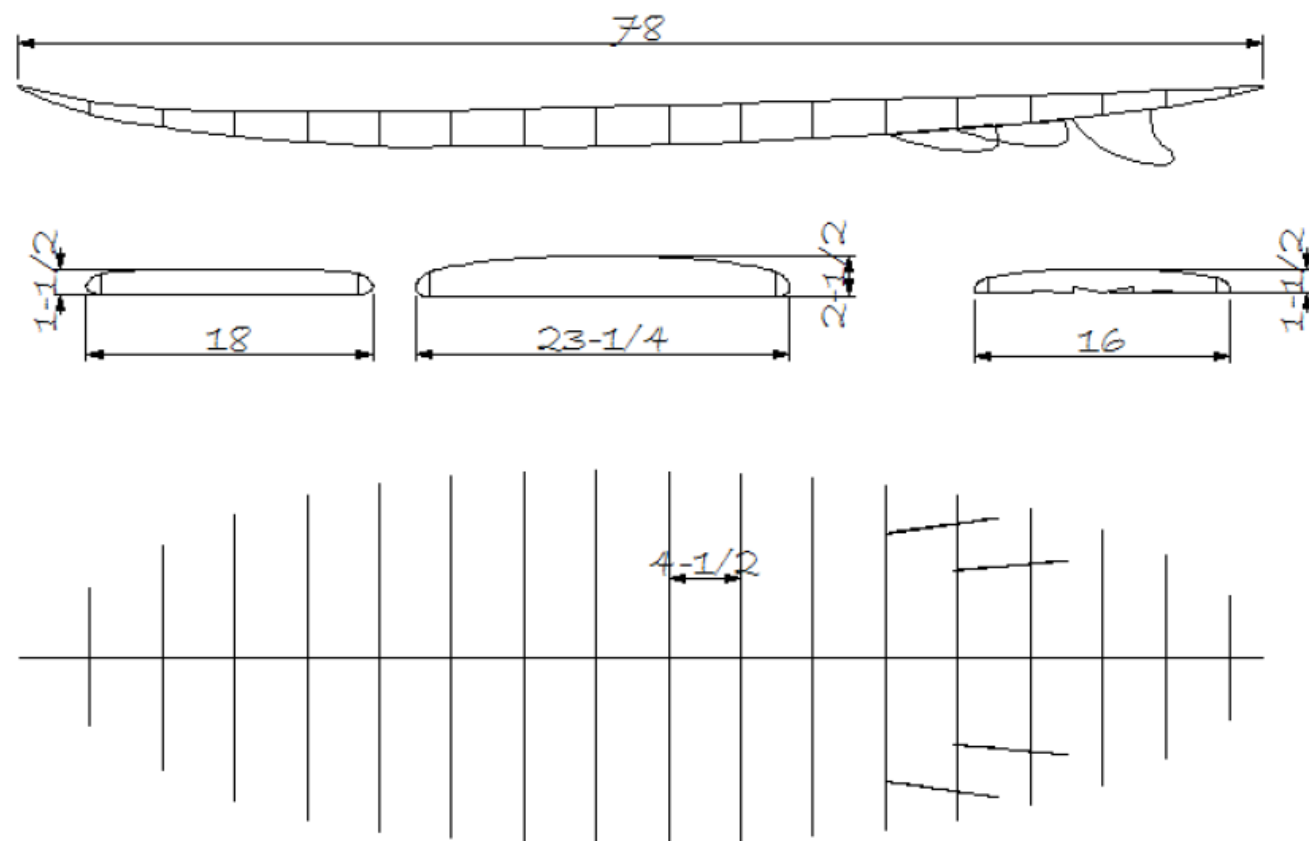
6'8" Toad

Shaper: Brad Tucker

Frame design: Brad Tucker

Note: These are exact frame dimensions. Board will finish approximately $\frac{1}{2}$ " thicker and up to 2" longer or shorter depending on materials used and final shaping

Note: Fins are for example only.
Fins are not included with frame kit



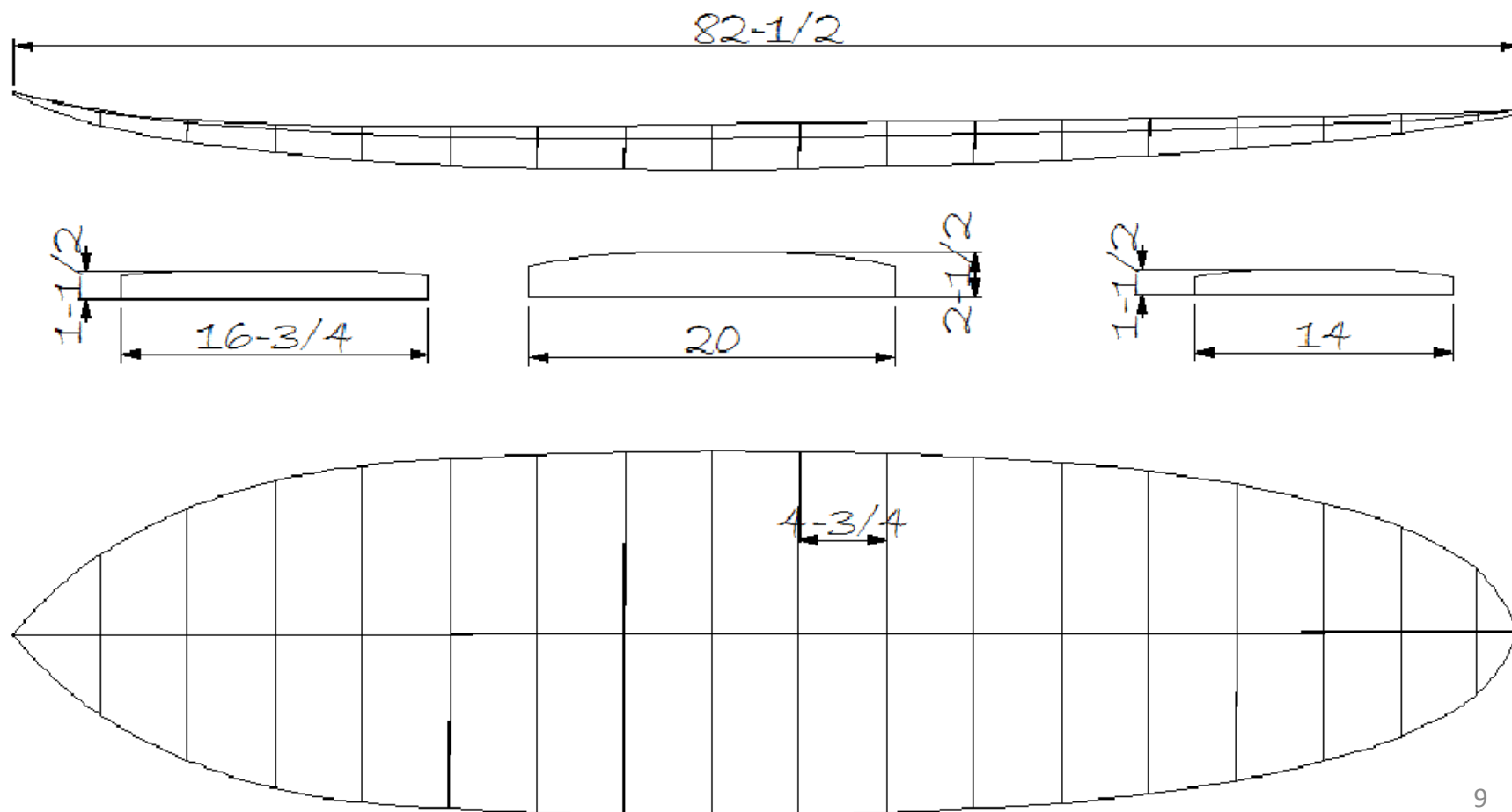
HOLLOWBALSA.COM

7'0" Driftwood

Shaper: Brad Tucker

Frame design: Brad Tucker

Note: These are exact frame dimensions. Board will
Finish approximately $\frac{1}{8}$ " thicker and up to 2" longer or
Shorter depending on materials used and final shaping



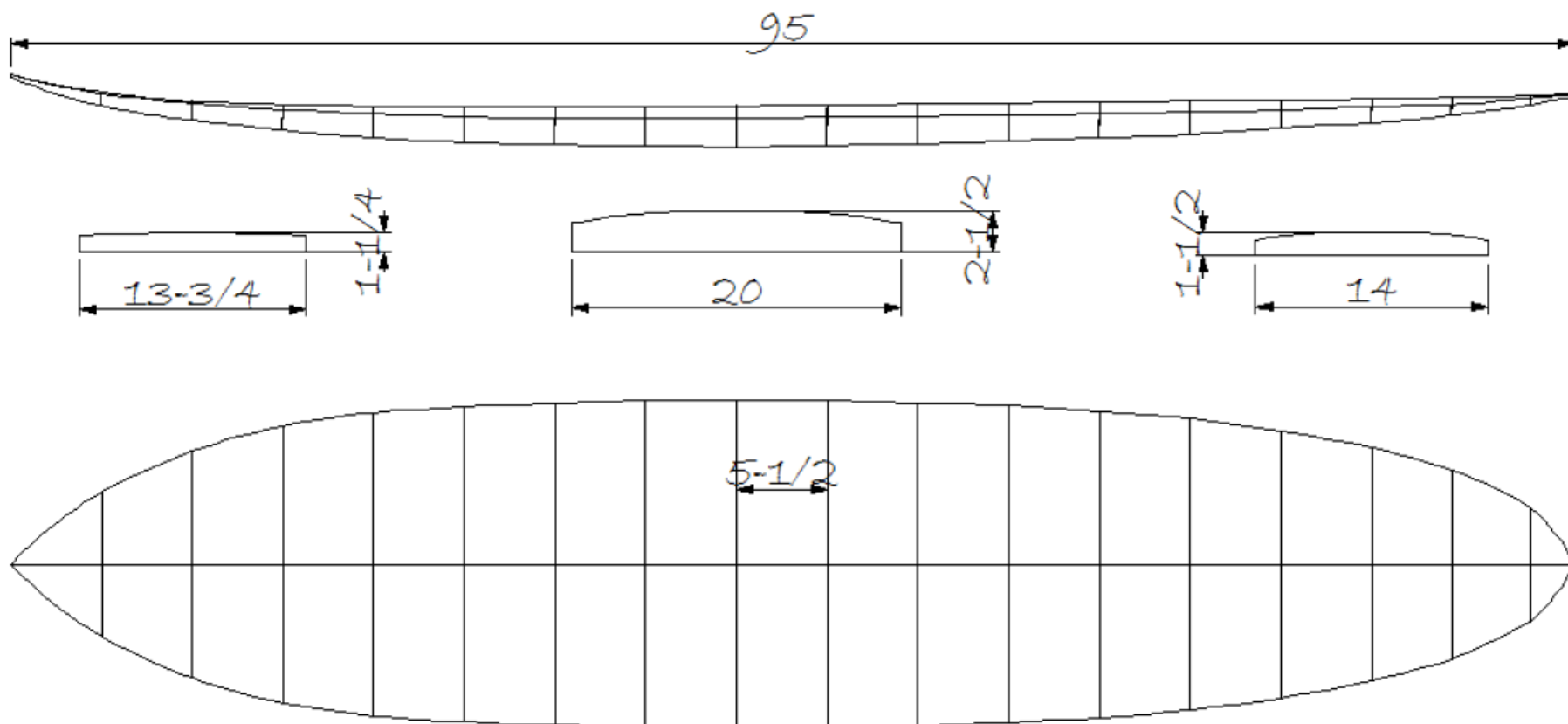
HOLLOWBALSA.COM

8'0" Driftwood

Shaper: Brad Tucker

Frame design: Brad Tucker

Note: These are exact frame dimensions. Board will finish approximately $\frac{1}{2}$ " thicker and up to 2" longer or shorter depending on materials used and final shaping

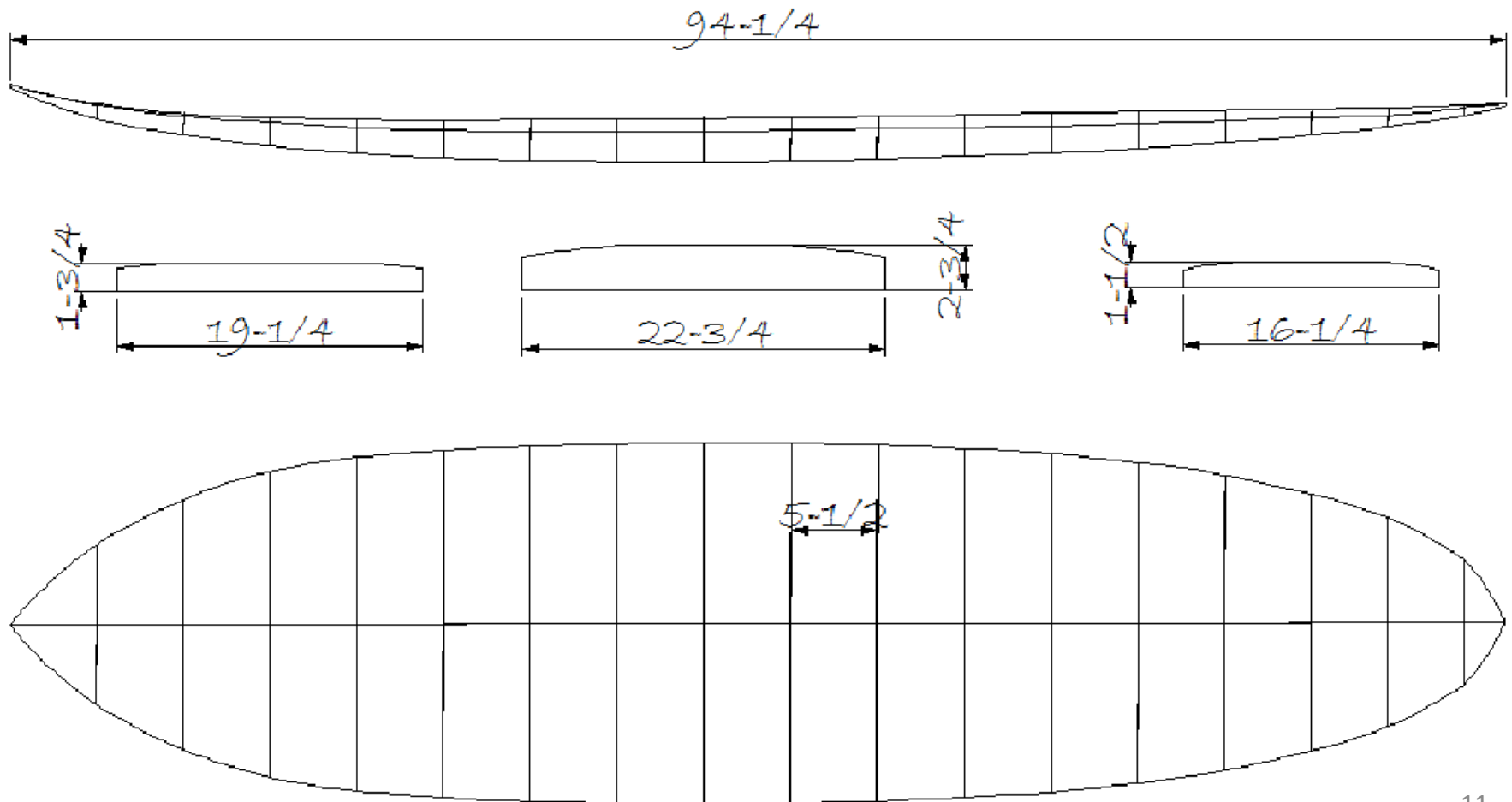


8'0" Driftwood Sr.

Shaper: Brad Tucker

Frame design: Brad Tucker

Note: These are exact frame dimensions. Board will
Finish approximately $\frac{1}{2}$ " thicker and up to 2" longer or
Shorter depending on materials used and final shaping



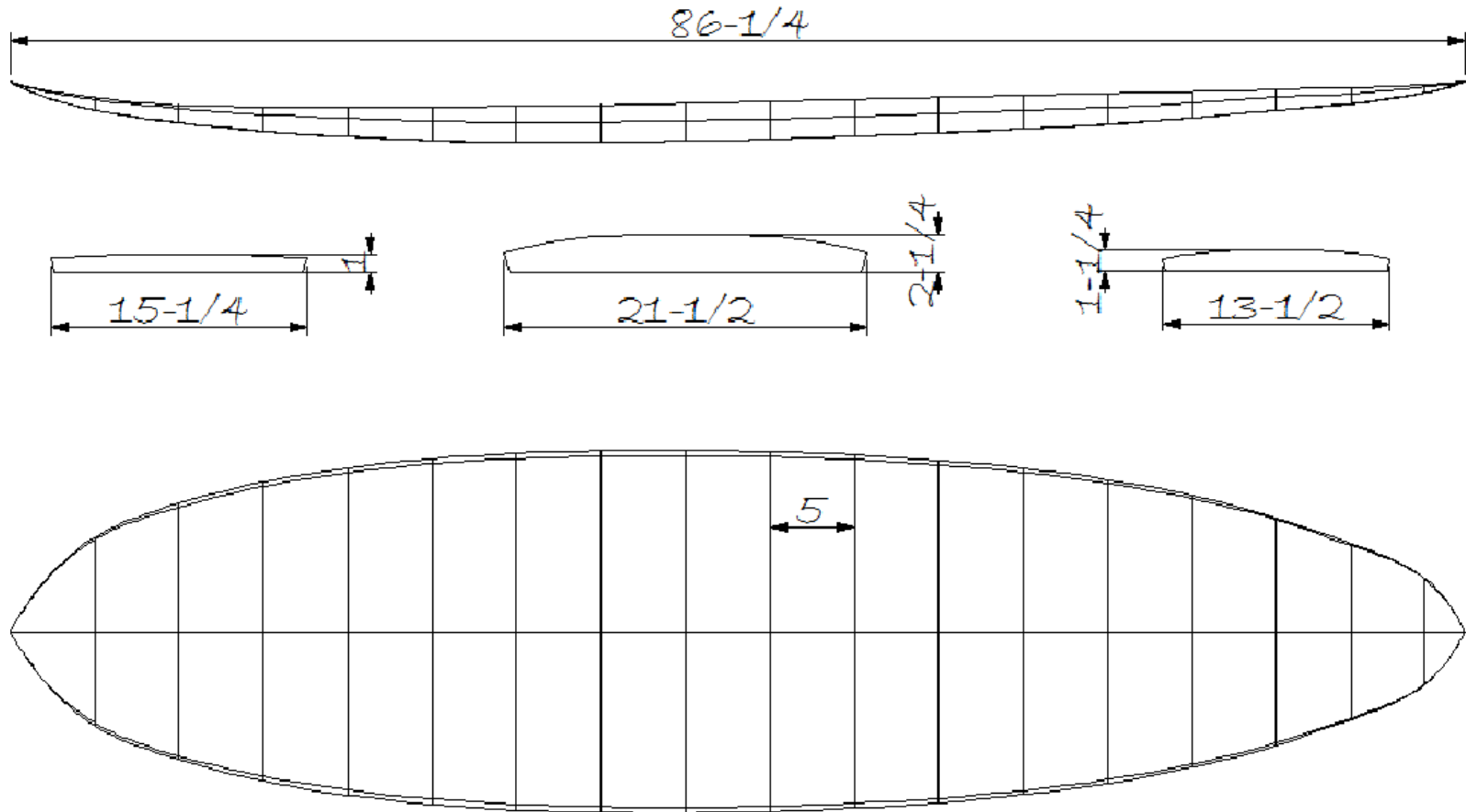
HOLLOWBALSA.COM

7'4" Chameleon

Shaper: Brad Tucker

Frame Design: Brad Tucker

Note: These are exact frame dimensions. Board will finish approximately $\frac{1}{2}$ " thicker and 2" longer or shorter depending on materials used and final shaping.



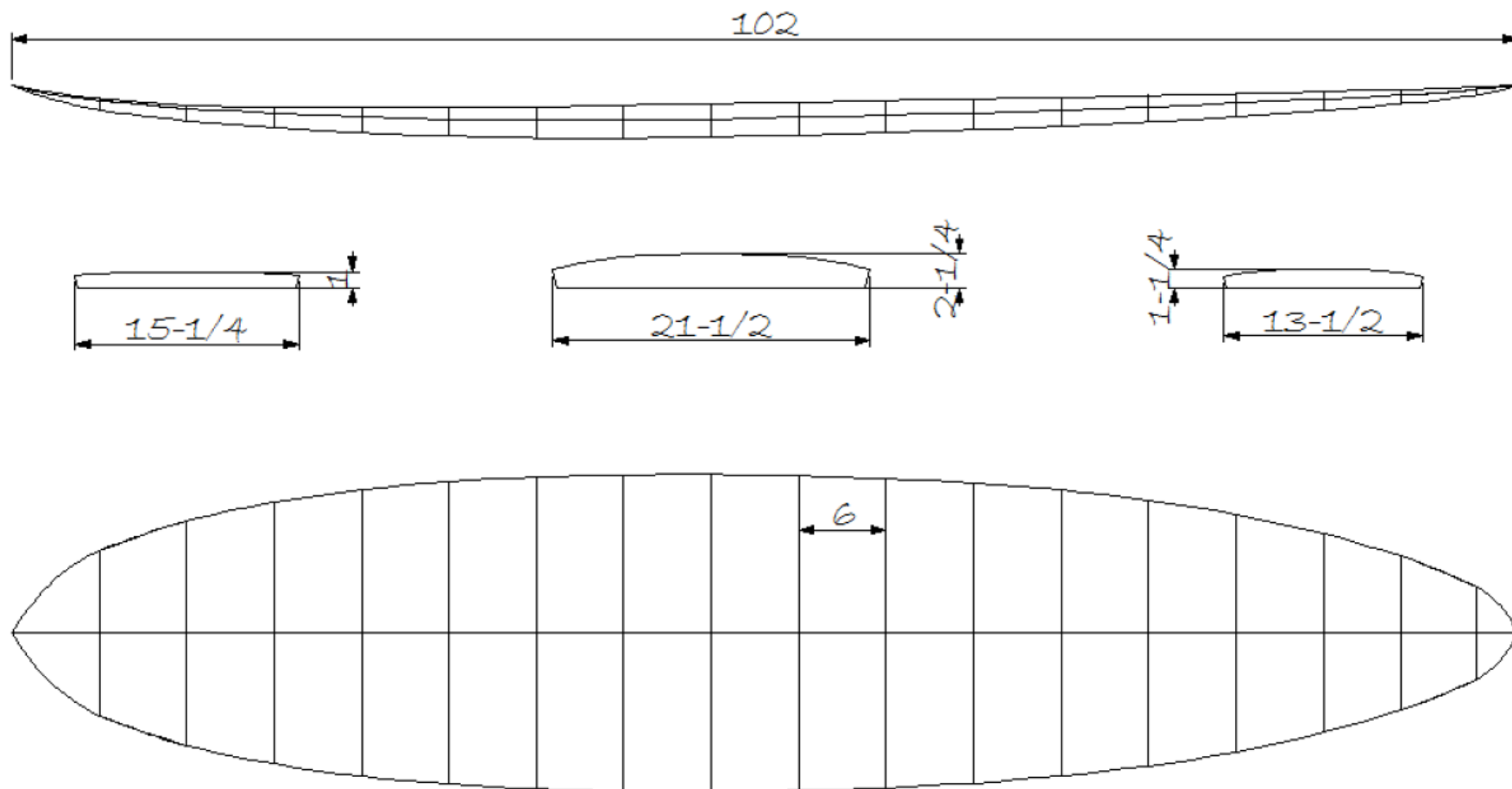
HOLLOWBALSA.COM

8'6" Chameleon

Shaper: Brad Tucker

Frame design: Brad Tucker

Note: These are exact frame dimensions. Board will
Finish approximately $\frac{1}{2}$ " thicker and up to 2" longer or
Shorter depending on materials used and final shaping



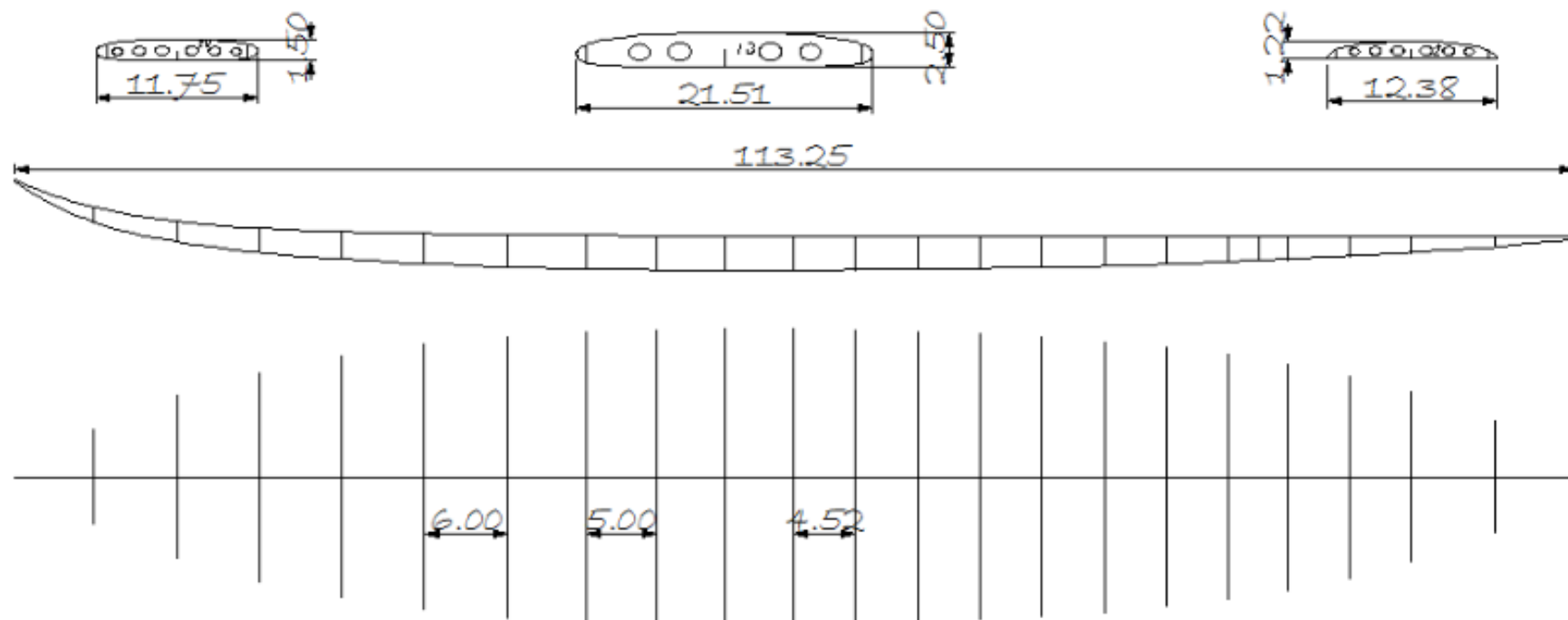
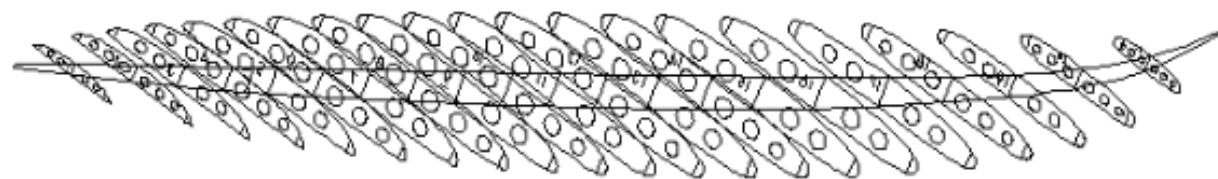
Wood Surfboard Supply

9'6" Cal Gun

Shaper: Mike Rumsey / Brad Tucker

Frame Design: Brad Tucker

Note: These are exact frame dimensions. Board will finish approximately $\frac{1}{2}$ " thicker and 2" longer or shorter depending on materials used and final shaping.



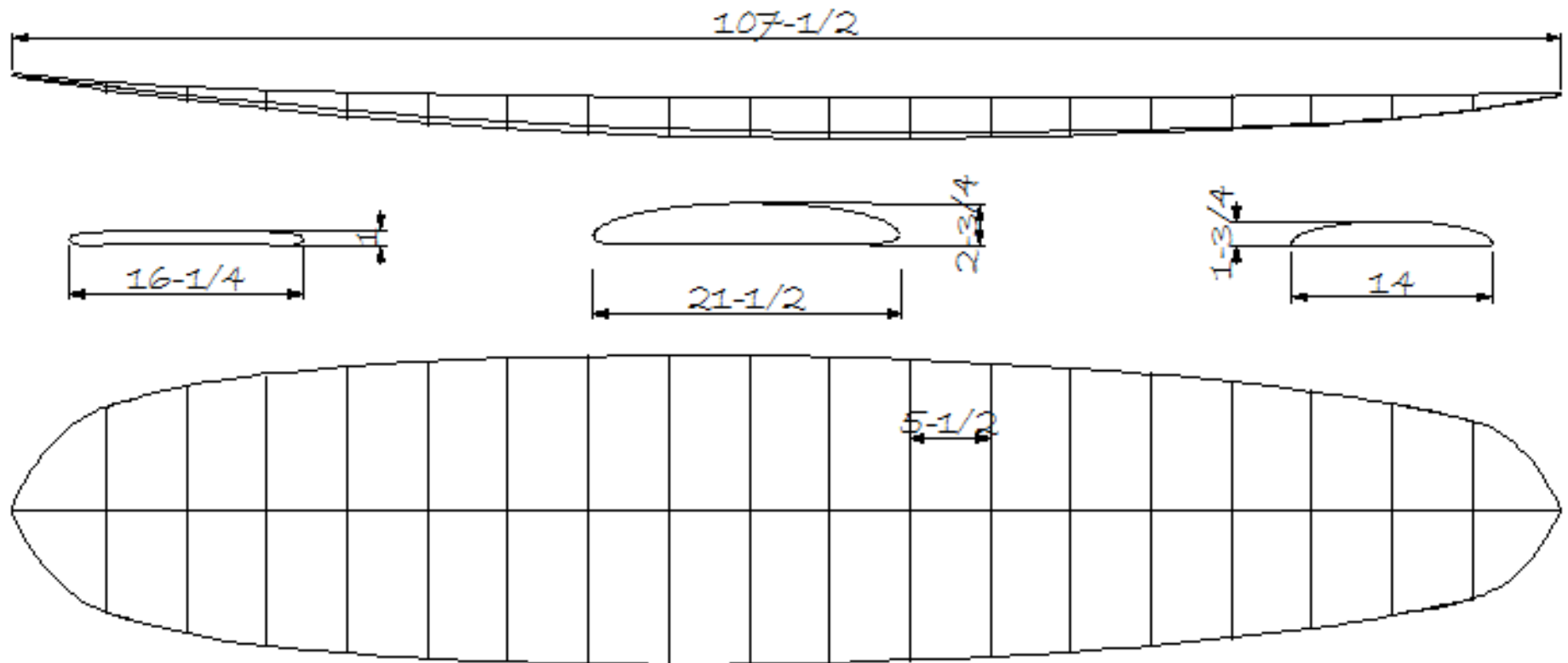
HOLLOWBALSA.COM

9'0" Cruiser

Shaper: Brad Tucker

Frame design: Brad Tucker

Note: These are exact frame dimensions. Board will
Finish approximately $\frac{1}{2}$ " thicker and up to 2" longer or
Shorter depending on materials used and final shaping



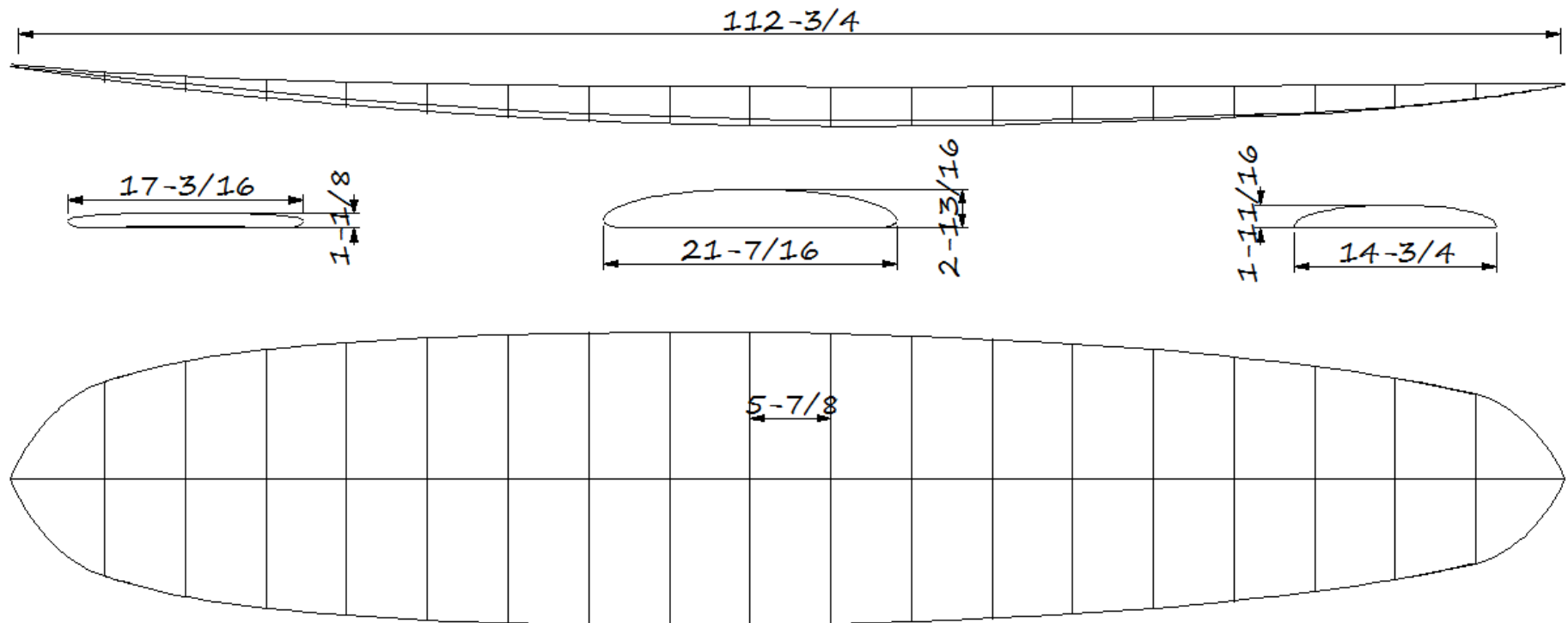
HOLLOWBALSA.COM

9'6" Cruiser

Shaper: Brad Tucker

Frame Design: Brad Tucker

Note: These are exact frame dimensions. Board will finish approximately $\frac{1}{2}$ " thicker and 2" longer or shorter depending on materials used and final shaping



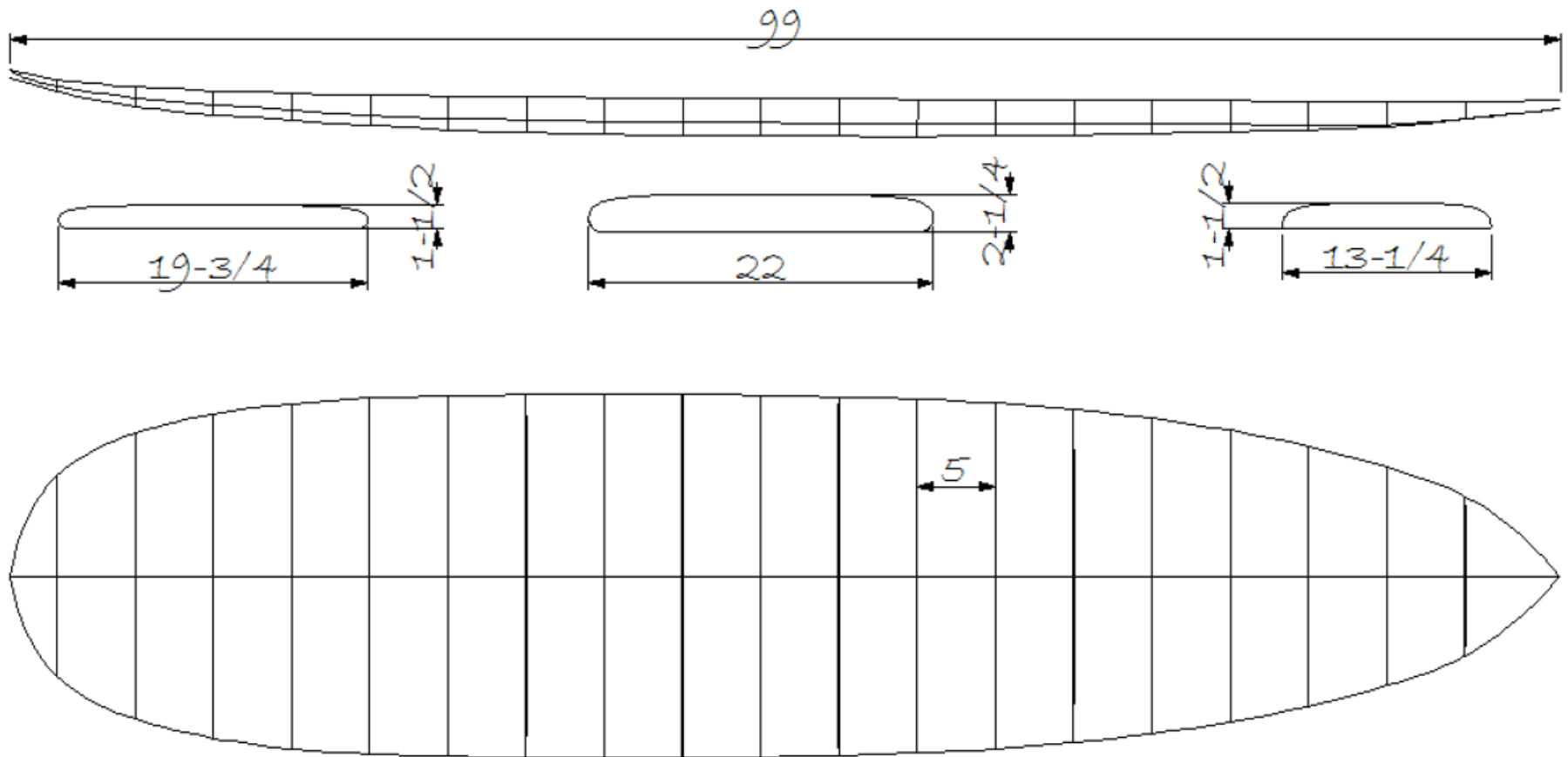
HOLLOWBALSA.COM

8'5" Minimal

Shaper: Brad Tucker

Frame Design: Brad Tucker

Note: These are exact frame dimensions. Board will finish approximately $\frac{1}{2}$ " thicker and 2" longer or shorter depending on materials used and final shaping.



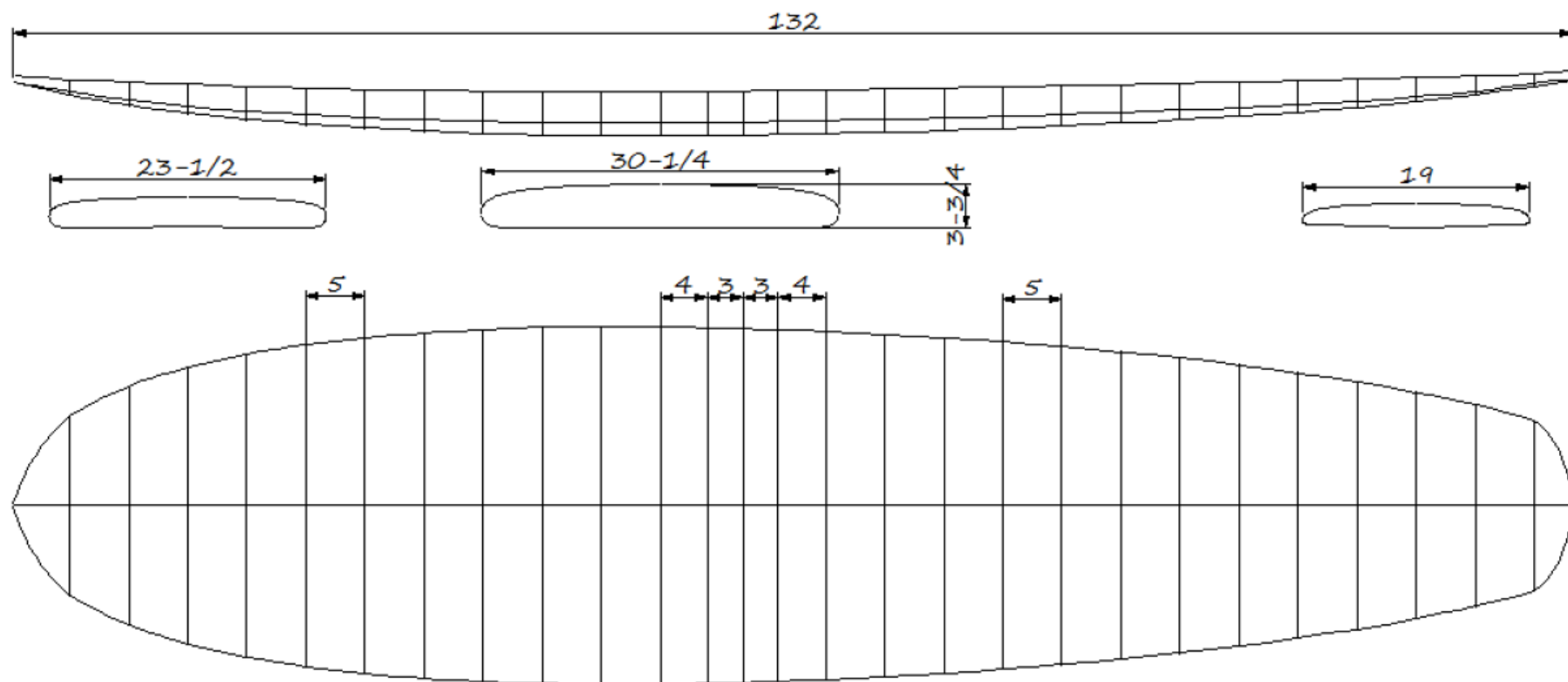
HOLLOWBALSA.COM

11'0" Malco SUP

Shaper: Malcolm Schweizer

Frame design: Brad Tucker

Note: These are exact frame dimensions. Board will
Finish approximately $\frac{1}{2}$ " thicker and up to 2" longer or
Shorter depending on materials used and final shaping



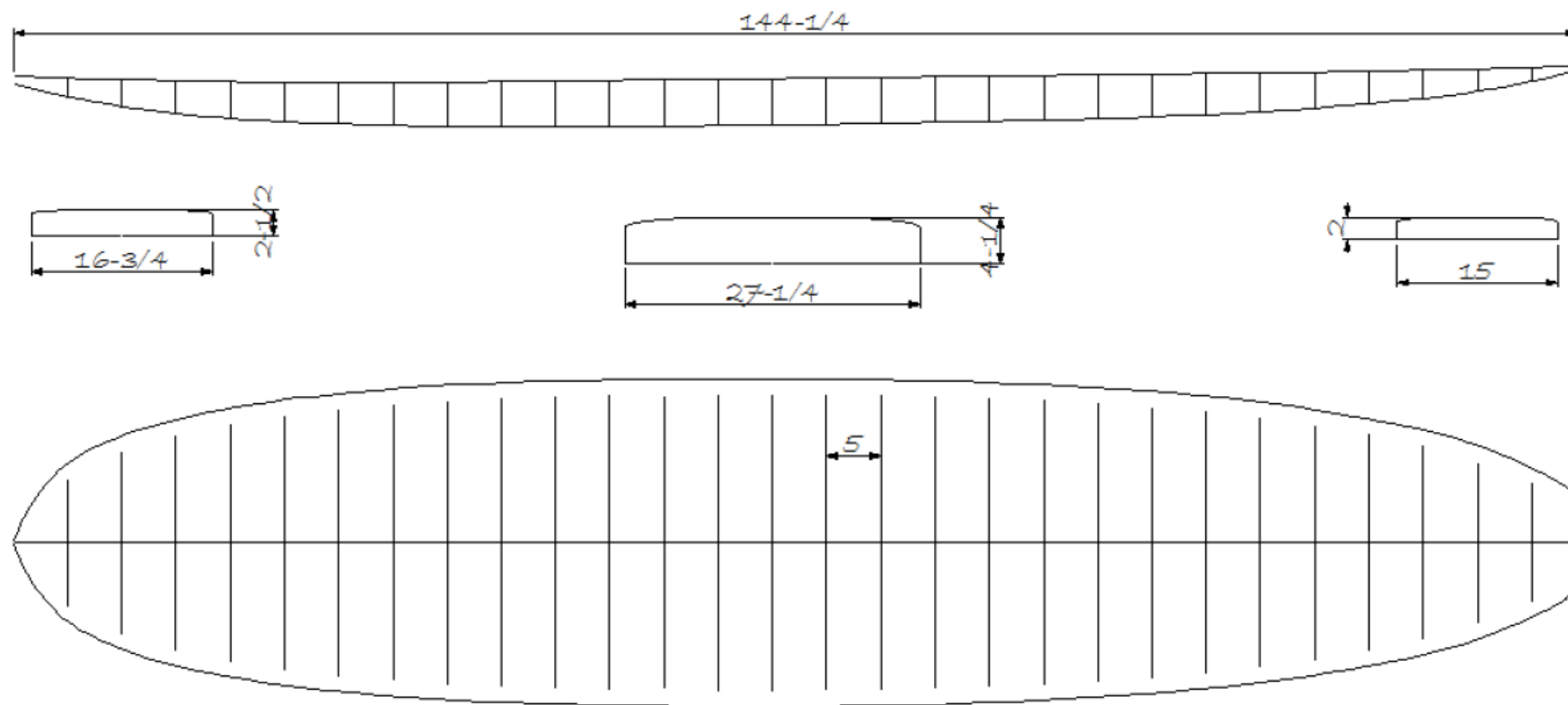
HOLLOWBALSA.COM

12'0" Lake Superior SUP

Shaper: Jack Young

Frame design: Brad Tucker

Note: These are exact frame dimensions. Board will
Finish approximately $\frac{1}{2}$ " thicker and up to 2" longer or
Shorter depending on materials used and final shaping



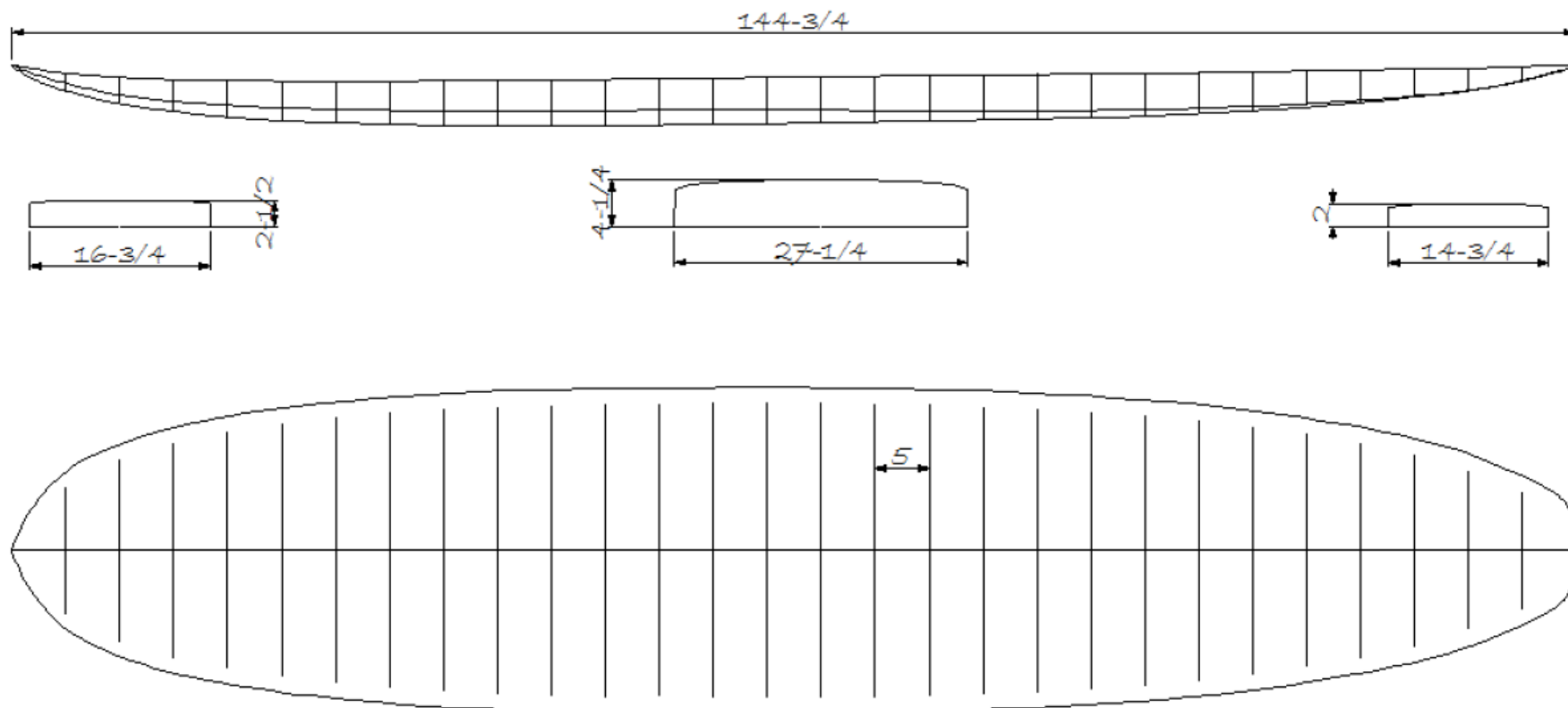
HOLLOWBALSA.COM

12'0" Orca Ocean SUP

Shaper: Jack Young

Frame design: Brad Tucker

Note: These are exact frame dimensions. Board will
Finish approximately $\frac{1}{2}$ " thicker and up to 2" longer or
Shorter depending on materials used and final shaping



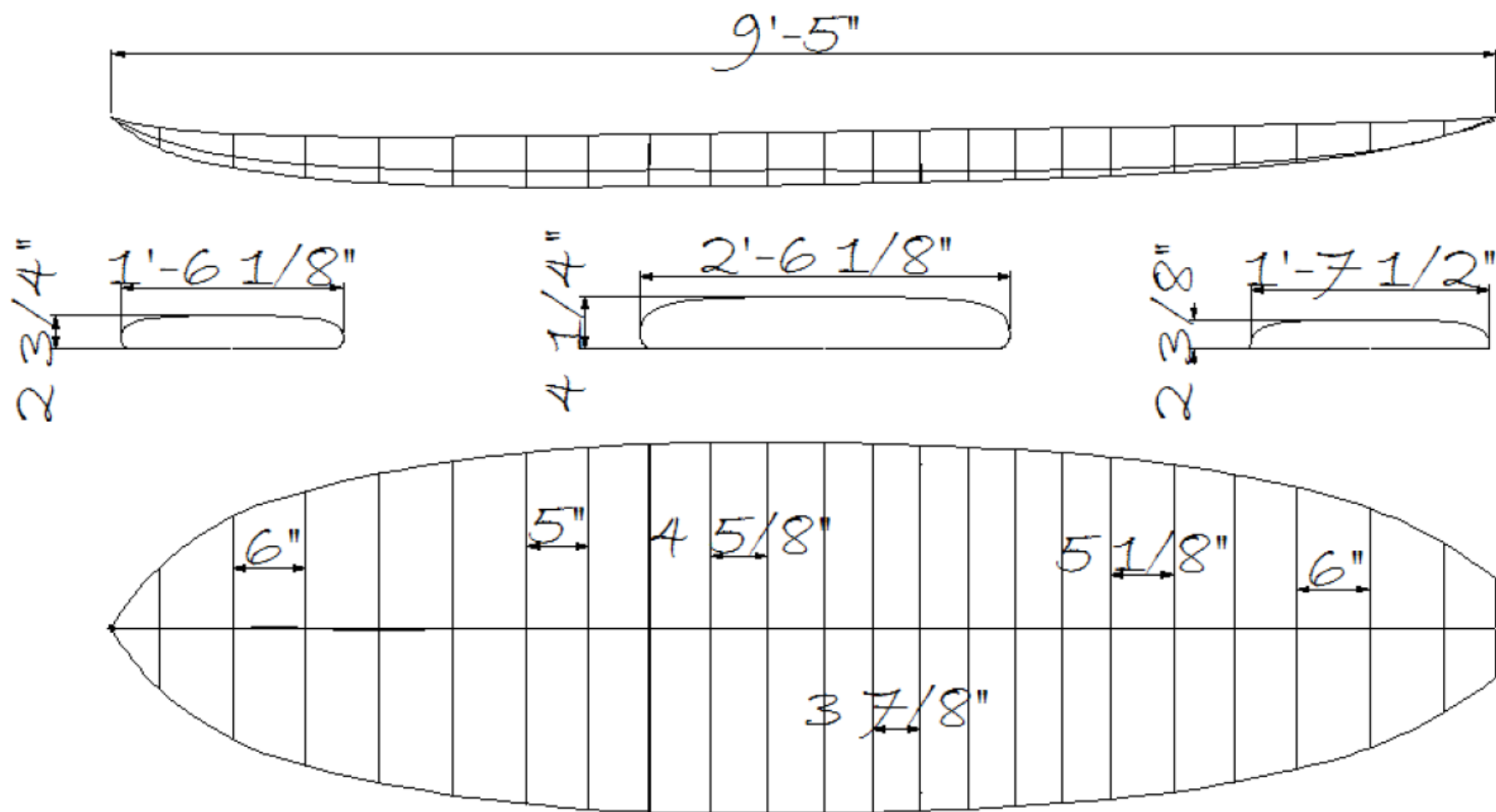
HOLLOWBALSA.COM

9'6" Stu's Surf SUP

Shaper: Brad Tucker

Frame design: Brad Tucker

Note: These are exact frame dimensions. Board will finish approximately $\pm 1/2$ " thicker and up to 2" longer or shorter depending on materials used and final shaping



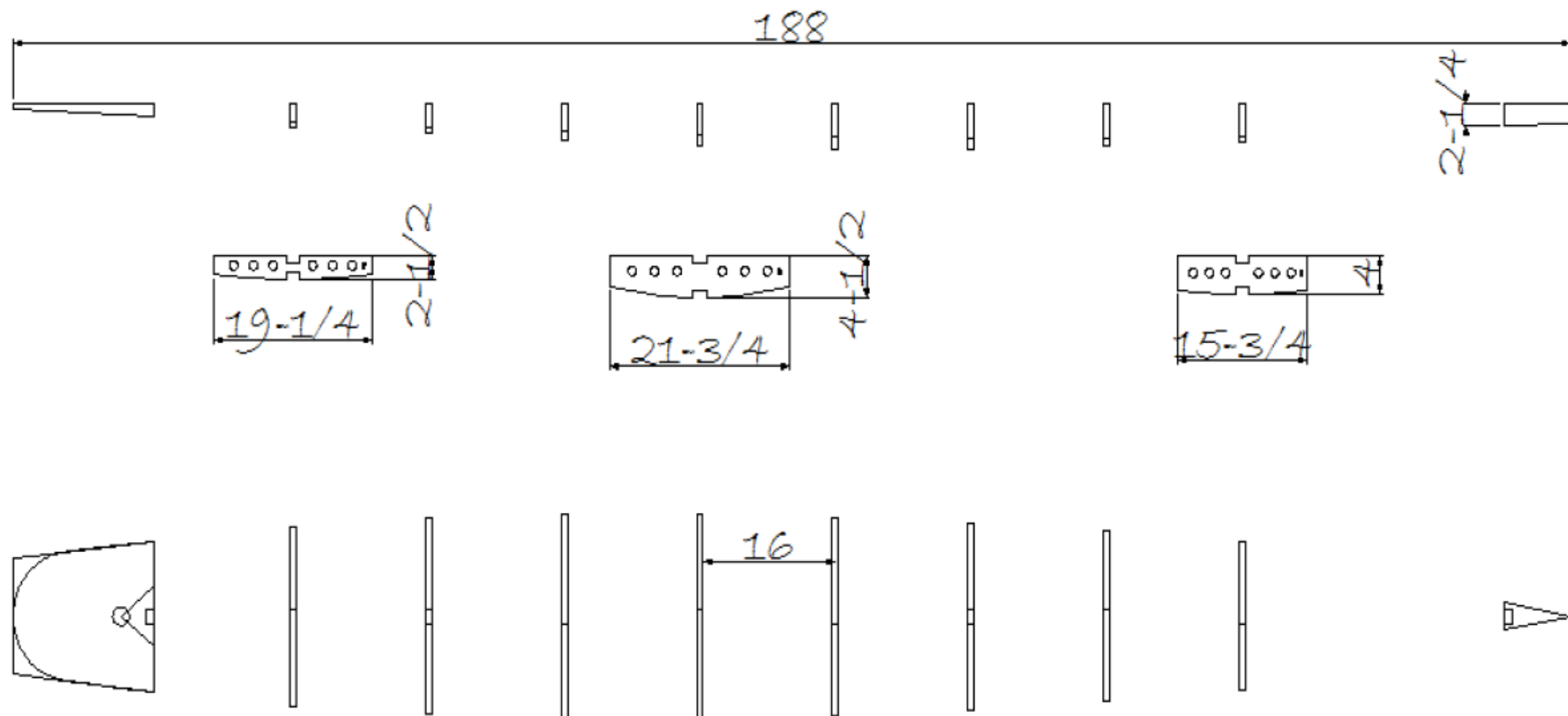
HOLLOWBALSA.COM

Tom Blake Replica

Shaper: Tom Blake

Frame design: Brad Tucker

Note: These are exact frame dimensions. Board will
Finish approximately $\frac{1}{2}$ " thicker and up to 2" longer or
shorter depending on materials used and final shaping

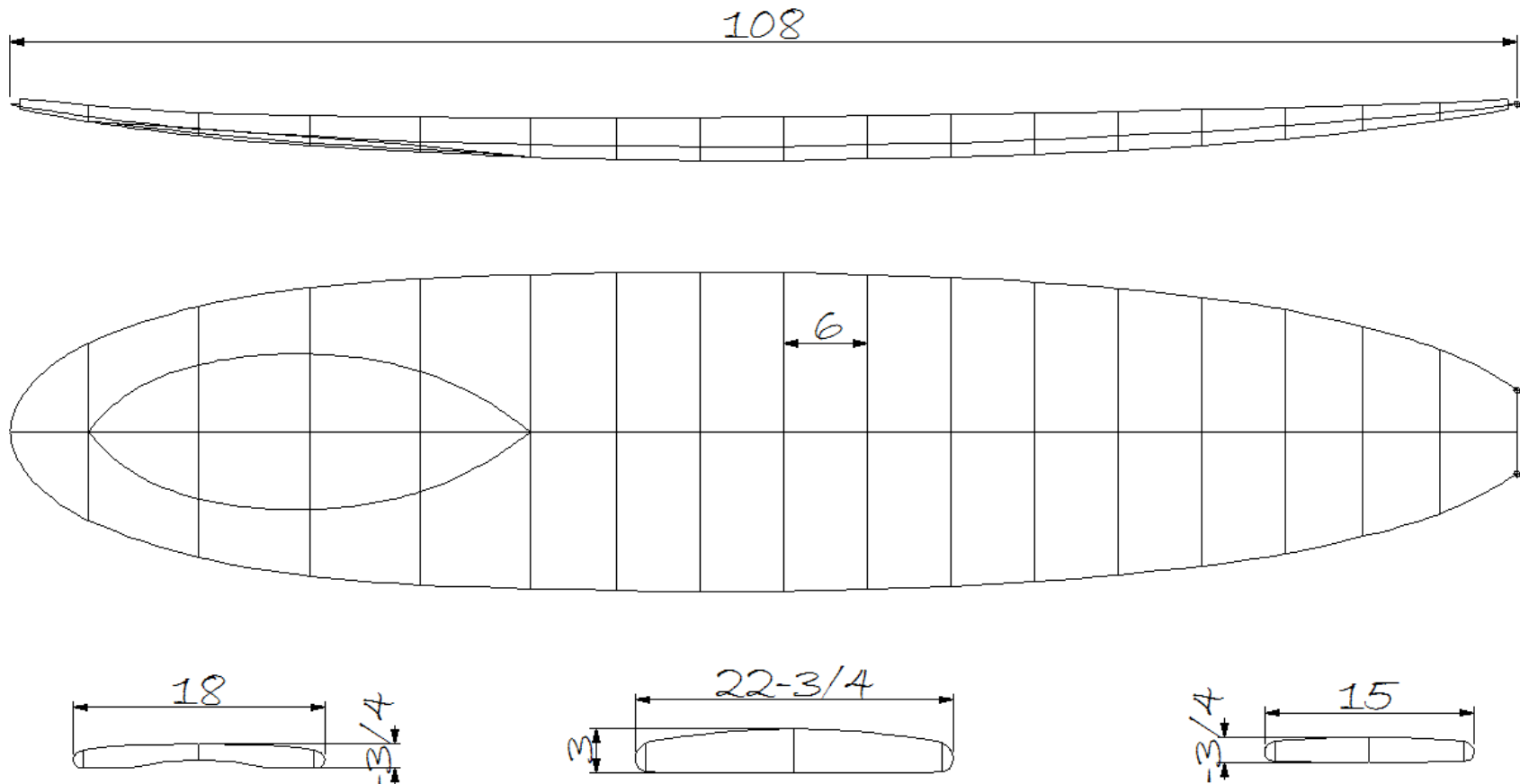


9'0" Robert August "What I Ride"

Shaper: Robert August

Frame Design: Brad Tucker

Note: Unlike the other frames in this catalog these are NOT frame dimensions.
These are expected finished board dimensions assuming $\frac{1}{4}$ " thick covering is used.
The actual frame dimensions = exactly $\frac{1}{2}$ " less than then listed width and thickness.



HOLLOWBALSA.COM

9'6" Robert August "What I Ride"

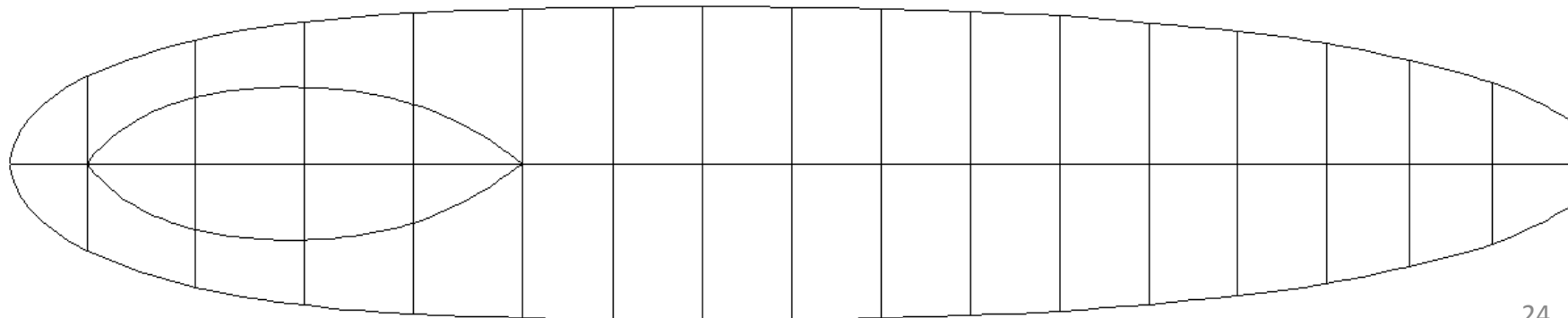
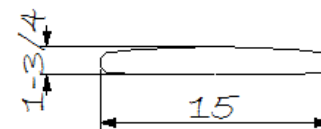
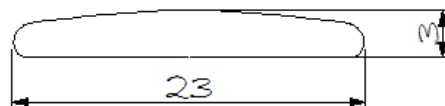
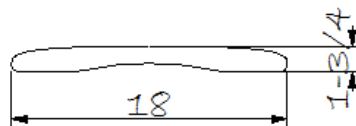
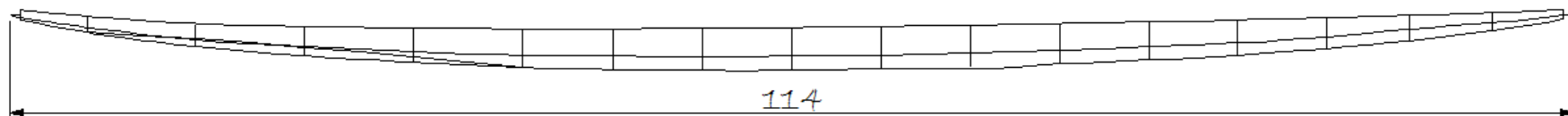
Shaper: Robert August

Frame Design: Brad Tucker

Note: Unlike the other frames in this catalog these are NOT frame dimensions.

These are expected finished board dimensions assuming $\frac{1}{4}$ " thick covering is used.

The actual frame dimensions = exactly $\frac{1}{2}$ " less than then listed width and thickness.



"The 10' 0" Gordo"

"The Gordo" is a classic *big boy* board. It catches waves easily and is stable enough to be used as a small Stand Up Paddleboard (SUP). Easily modified to finished lengths between 9' 8" to 10' 4". But just because its big doesn't mean its clumsy. The rails have been pinched slightly to give it agility and performance. The ride is what you can only get from a wood board. It will spoil you with its drive.

Type - 10' 0" Longboard

Finished Length – 10' 0"

Width – 23 1/2 in.

Nose – 18 in.

Tail – 15 1/2 in.

Thickness – 3 3/8 in.

The kit contains a complete frame kit for "The Gordo" consisting of ribs and main spar (stringer). Also included is a comprehensive manual containing complete building instructions. It covers everything from laying out the frame to glassing and installing fins. The manual is emailed to you in PDF format as soon as the order is processed so you can be planning your build before the kit arrives.

www.woodsrfboardsupply.com

for further details and pictures of actual boards made from this kit.



Typical Assembled Frame



Finished West Coast Gordo

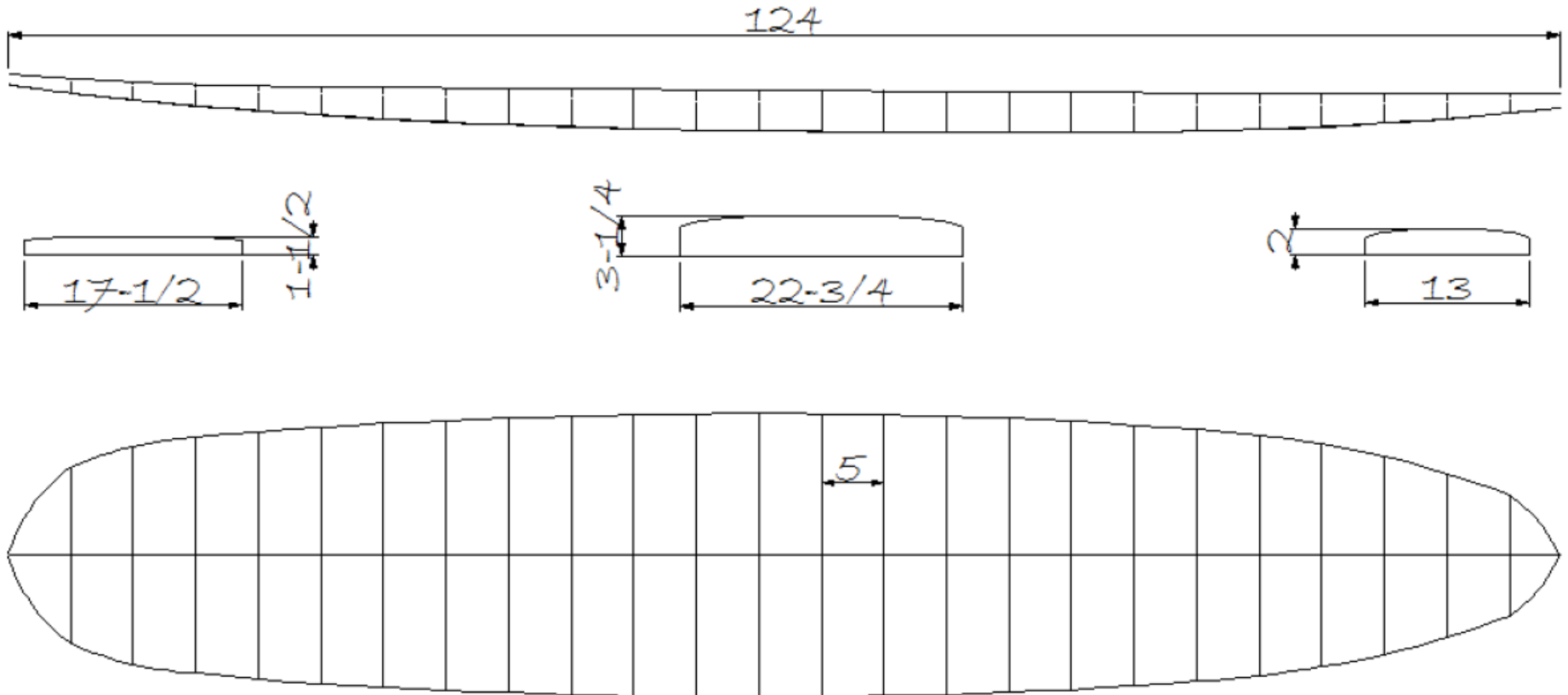
HOLLOWBALSA.COM

10'6" Muy Gordo

Shaper: Brad Tucker

Frame Design: Brad Tucker

Note: These are exact frame dimensions. Board will finish approximately $\frac{1}{2}$ " thicker and 2" longer or shorter depending on materials used and final shaping.



CNC Rough shaped Paulownia wood
Alaia blank
Ready to finish sand, seal and surf.

